

CONSULTING ENGINEERS

The Company

Our history

Atec S.A., originally the Latin American branch of Motor Columbus International, consulting firm with more than 70 years providing engineering services from Baden Switzerland, was established in Buenos Aires, Argentina, back in 1969.



The combination of Swiss excellence and quality, management capabilities and a clear orientation towards client satisfaction, allowed Atec a sustainable growth throughout the years, transforming the Company in one of the most reputed and qualified organizations in Latin America providing high standards of Project Management and Engineering in several fields.

Power Plants
Energy Transmission
Energy Distribution
Energy Generation
Environment
Railways
Subways
Infrastructure
Roads

Airports
Residential
High Rise Buildings
Commercial Buildings
Industrial
Highways
Urban Design
Transportation
Bridges

Service Highlights

To ensure the excellence required from the initial stages to the completion of the projects, Atec has the top quality international in-house professional expertise ready to provide a wide variety of services with local knowledge and environmentally minded.

40 years of experience



More than 1.500.000 m2 of buildings designed or managed

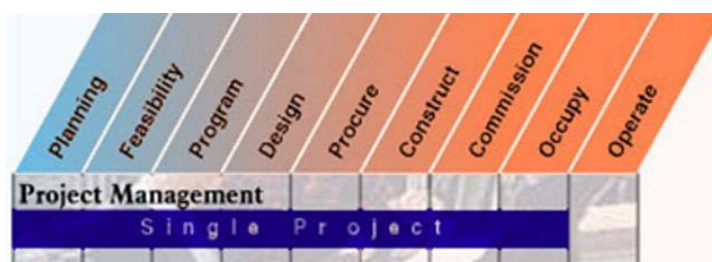
More than 3.000.000 m3 of concrete structure designed or managed

Comprehensive Project Management

Comprehensive Project Management gives us the maximum opportunity to positively affect the outcome of a client's project by injecting our experience and knowledge at the earliest planning stages.

The earlier we are able to influence the major decisions that shape a project, where the opportunity to do so is the greatest, the more we can contribute to optimize cost and schedule downstream. In turn, the further into design and ultimately construction a project precedes, the greater the cost of significant design or schedule changes.

Project management is a set of comprehensive services, which includes the management and coordination of all design, procurement and construction activities, as well as the implementation, and coordination of the various tasks that form part of the client overall project workload. As Project Manager, Atec provides single-source accountability and serves as the equivalent of an in-house project implementation.



Construction Management

Construction Management brings our experience and knowledge to the project during the Procurement and Construction phase, working with the architect and engineers to achieve the optimum cost, schedule and quality.

Construction Management also lends itself to extended participation on the client behalf through commissioning and occupancy. In addition, planning and managing the actual move into the completed facility is an optional bolt-on service that extends the added-value of our involvement.

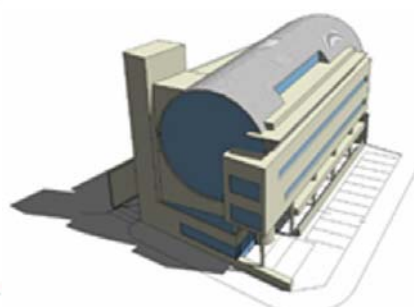
With Construction Management, the client contractually holds all the trade contracts enabling the construction manager to freely act as the client's agent.



Engineering

Due to the vast experience of our staff, Atec engineering not only provides with the required technical experience to deliver the necessary documentation to achieve optimal results, but also with the proper advice on schedule, budget, materials, constructability, mechanical systems and value engineering.

In order to recommend the proper structure of bid packages during procurement, Atec's interdisciplinary departments are able to assist the architects/engineers and the client to establish the best strategy and consequently all related engineering documents produced.



Related Services

Project Management

Contract Administration
Claim Management
Quantity Surveying
Site Supervision
Procurement
Design Management
Value Engineering
Planning & Scheduling
Risk Management

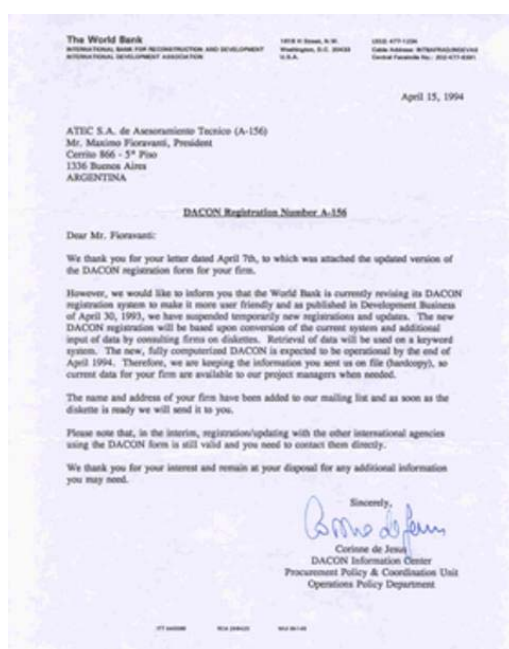
Engineering

Architecture Design
Structure Design
Electrical Design
Mechanical Design
Traffic Studies
Tender Documents
Quality Assurance/Control
Project Control Systems
Feasibility Studies

Registrations & Affiliations

Atec is affiliated in key international institutions, like:

- World Bank (WB),
- Interamerican Development Bank (IDB),
- International Financial Corporation (IFC),
- International Federation of Consulting Engineers (FIDIC),
- Pan American Federation of Consultants (FEPAC)
- Argentine Chamber of Consultants (CAC)





Atec's strengths and advantages are:

- Reputation and know how,
- Proven managers,
- Long track records,
- International experience,
- Local market understanding,
- Decentralized operation,
- Required support of the head office.

Which are guarantees of reliable services to satisfy the demanding regional markets.



Buenos Aires, Argentina head office.



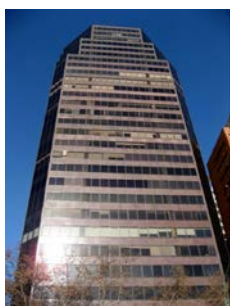
COMPANY DATA SHEET

1. **Company Name:**
ATEC S.A.
 2. **Main Address:**
Cerrito 866 - 5th Floor
 - Zip Code:**
C1010AAR
 3. **City:**
Buenos Aires
 - Country:**
Argentine Republic
 4. **Telephone:**
(54 11) 4816-4006
 - Fax & email:**
Fax: (54 11) 4815-2636
Email: atecsa@atecsa.com.ar
 5. **CUIT N°:** 30-51745293-5
 6. **Contact :** Ing. Federico Mendivil
fmatec@atecsa.com.ar
 7. **Web Page:** www.atecsa.com.ar
-

Selected References

ATEC

High Rise / buildings



Tower, Libertador & Cerrito
Buenos Aires, Argentina
27.000m2, Value U\$ 15 M
Eugenio Tonconogy,



Tower, Libertador & Ocampo
Buenos Aires, Argentina
30.000m2, Value U\$ 33 M
Estudio Fizbein,



Tower, Libertador & SM de Tours
Buenos Aires, Argentina
14.000 m2, Value U\$ 13 M
Mario Roberto Álvarez



Tower, Libertador & SM de Tours
Buenos Aires, Argentina
11.0000 m2, Value U\$ 11 M
SEBRA



Tower, Talcahuano
Buenos Aires, Argentina
14.000m2, Value U\$ 13 M
Mario Roberto Álvarez



Towers, Ugarteche Cervino Segui
Buenos Aires, Argentina
32.000m2, Value U\$ 15 M
Ignacio Camps & Associates



Tower, Hotel Panamericano
Buenos Aires, Argentina
28.0000 m2, Value U\$ 20 M
SEBRA



Tower, Ocampo
Buenos Aires, Argentina
33.0000 m2, Value U\$ 32.5 M
Antonini Schon Zemborain



Office Building, Coronel Diaz Juncal
Buenos Aires, Argentina
18.800m2, Value U\$ 20 M
Mario Roberto Alvarez



Tower, Alem 690
Buenos Aires, Argentina
11.300 m2, Value U\$ 16.5 M
Mario Roberto Alvarez



Tower, Talcahuano
Buenos Aires, Argentina
14.000 m2, Value U\$ 20.3 M
Mario Roberto Alvarez



Towers, Tiboron I & II
Punta del Este, Uruguay
40.000 m2, Value U\$ 70 M
Mario Roberto Alvarez

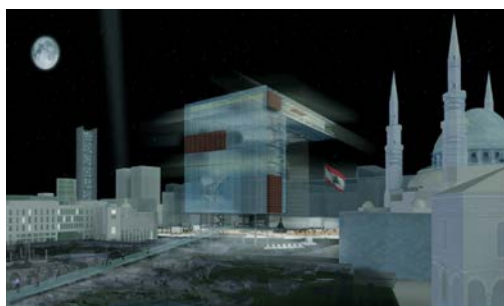
Commercial



**Shopping Centre,
Cordoba, Argentina**
14.300m², Value U\$ 14,3 M
Antonini Schon Zemborain



**Shopping Centre,
Santiago del Estero, Argentina**
20.400m², Value U\$ 15,3 M
Antonini Schon Zemborain



**Commercial Mix Used,
Beirut, Lebanon**
678.0000 m², Value U\$ 1.000 M
Antonini Schon Zemborain



**Shopping Centre,
Cordoba, Argentina**
19.000m², Value U\$ 14,3 M
Antonini Schon Zemborain

Urban Design



**Urban Design, 9 de Julio Avenue
Buenos Aires, Argentina**
10 km., Value U\$ 635 M



**Urban Design, Port Expansion
Buenos Aires, Argentina**
4 km., Value U\$ 350 M



**Urban Design, Mix Used Development
Rosario, Argentina**
87.000 m², Value U\$ 52M



**Urban Design, Puerto Madero
Buenos Aires, Argentina**
51 km.. Value U\$ 200 M



**Urban Design, Retiro
Buenos Aires, Argentina**
Value U\$ 50 M

Civil Works



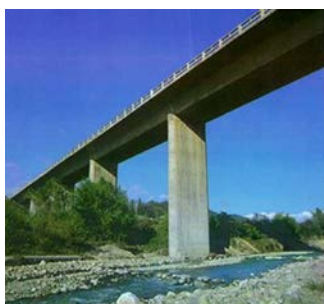
Airports Infrastructure
Ezeiza, Buenos Aires, Argentina
Value U\$ 600 M



Airports Infrastructure
Corrientes, Argentina
Value U\$ 5 M



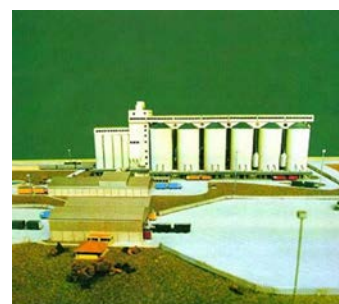
Airports Infrastructure
Rio Gallegos, Argentina
14.000 m2, Value U\$ 16 M



Bridge, Concrete
Jujuy, Argentina
224,57,80 m, Value U\$ 2,5 M



Cement Plant
Buenos Aires, Argentina
600.000 thns/year, Value U\$ 25 M



Silos
Buenos Aires, Argentina
20 silos 100.000tns, Value U\$ 13 M



Bridge, Precast Concrete
Villa de Ayolas, Paraguay.
16 m, Value U\$ 23 M



Petrol Stations
Argentina, Paraguay, Uruguay
Plan 200 stations, Value U\$ 52 M



Petrol Stations
Argentina,
Plan 200 stations, Value U\$ 50 M



Housing Plan
Argentina, Paraguay
255.000 m2, Value U\$ 93 M



Fuel and Mineral Port, Campana,
Argentina
Docks for PANAMAX Ships,
Value U\$ 100 M



Bridge, Steel
Buenos Aires, Argentina
Main span 160 m, Value U\$ 5 M

Power



**Interconnected Nacional System
Argentina**
5.300 km. , Value U\$ 800 M



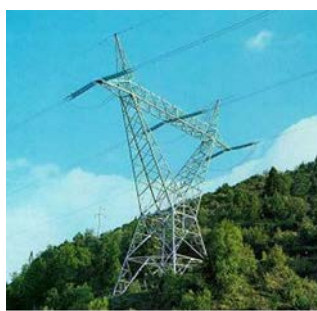
**Railway Electrification
Buenos Aires, Argentina**
60 km., 132 kv, Value U\$ 27 M



**Power, High Tension Line
Neuquen, Entre Rios, La Pampa ,
Buenos Aires, Argentina**
1.665 km, 500 kV, Value U\$ 370 M



**Power, High Tension Line
Cordoba, Santiago, Tucuman,
Argentina**
614 km, 500 kV, Value U\$ 95 M



**Power, High Tension Line
Chubut , Argentina**
550 km, 330 kV, Value U\$ 70 M



**Power, High Tension Line
Chaco, Tucuman, Entre Rios, Buenos
Aires , Argentina**
1.050 km, 500 kv, Value U\$ 150 M



**Wind Farms PER 1 and PER 2, Chubut,
Argentina,**
43 1,8 MW wind turbines.
Value U\$ 160 M



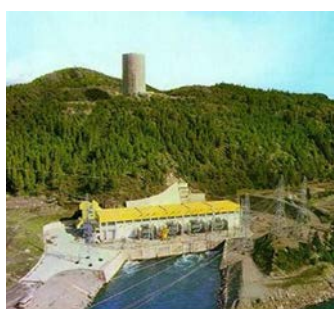
**Power, High Tension Line
Santa Fe, Chanco, Corrientes,
Argentina**
528 km, 500 kV, Value U\$ 235 M



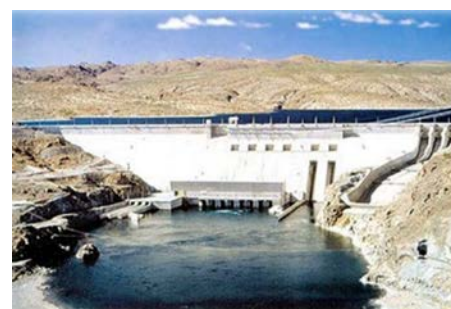
**Power, High Tension Line
Patagonia, Argentina**
620 km, 132 kV, Value U\$ 62 M



**Power, Transformer Stations
Corrientes, Chaco, Argentina**
Value U\$ 50 M

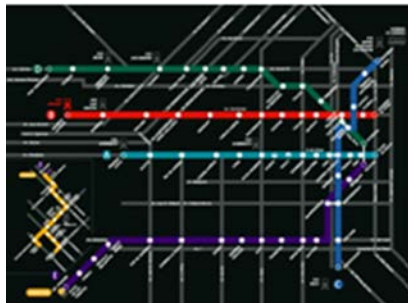


**Power Plant Futalufu
Chubut , Argentina**
Installed Cap. 448 MW
Value U\$ 250 M



**Power Plant Piedra del Aguila,
Neuquen , Argentina**
Installed Cap. 2100 MW
Value U\$ 750 M

Railways & Subways



Subway, System Modernization
Buenos Aires, Argentina
40 km, Value U\$ 6.000 M



Elevated Railroad San Martín line
Buenos Aires, Argentina
Value 190 M



Railway, Signaling System Upgrading
Buenos Aires, Argentina
420 km., 10 lines, 68 stations
Value U\$ 110 M



Subway, A Line extension
Buenos Aires, Argentina
4 stations, Value U\$ 62 M



Subway, E Line
Buenos Aires, Argentina
5 km, 4 stations, Value U\$ 75 M



Subway, E Line
Buenos Aires, Argentina
5 km.3 stations, Value U\$ 62 M



Railway, TBA
Buenos Aires, Argentina
120 km., 4 lines, 110 stations
Value U\$ 80 M



Sarmiento Railroad - Underground tunnel and stations, Buenos Aires, Argentina
20 km, 9 stations. Value U\$ 3000 M



Railway, Tren de la Costa
Buenos Aires, Argentina
25 km., 9 stations,
Value U\$ 170 M

Highways & Roads



Highways, 25 de Mayo, Perito Moreno
Buenos Aires, Argentina
16 km, Value U\$ 700 M



Highway, Acceso Norte
Buenos Aires, Argentina
20 km, Value U\$ 60 M



Highway, Acceso Oeste
Buenos Aires, Argentina
51 km, Value U\$ 300 M



Highway, Ruta Nacional 120
Corrientes, Argentina
30 km



Highway, Ruta Nacional 7
San Luis, Argentina
212 km, Value U\$ 126 M.



Highway, Ruta Nacional 14
Entre Rios, Argentina
33 km, Value U\$ 126 M



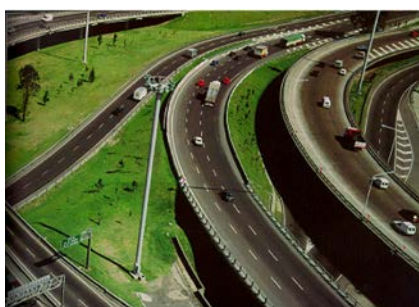
Highway, Acceso Norte Extensión
Buenos Aires, Argentina
Value U\$ 15 M



Highway, Ruta Nacional 148
San Luis, Argentina
175 km, Value U\$ 80 M



Highway, 25 de Mayo
Buenos Aires, Argentina
Flyovers, Value U\$ 6 M



Highway, General Paz ring road
Buenos Aires, Argentina
Value U\$ 70 M



Highway, Ring road & Accesses
Cordoba, Argentina
Value U\$ 140 M



Highway & Roads Modernization
Argentina
550 km, Value U\$ 100 M